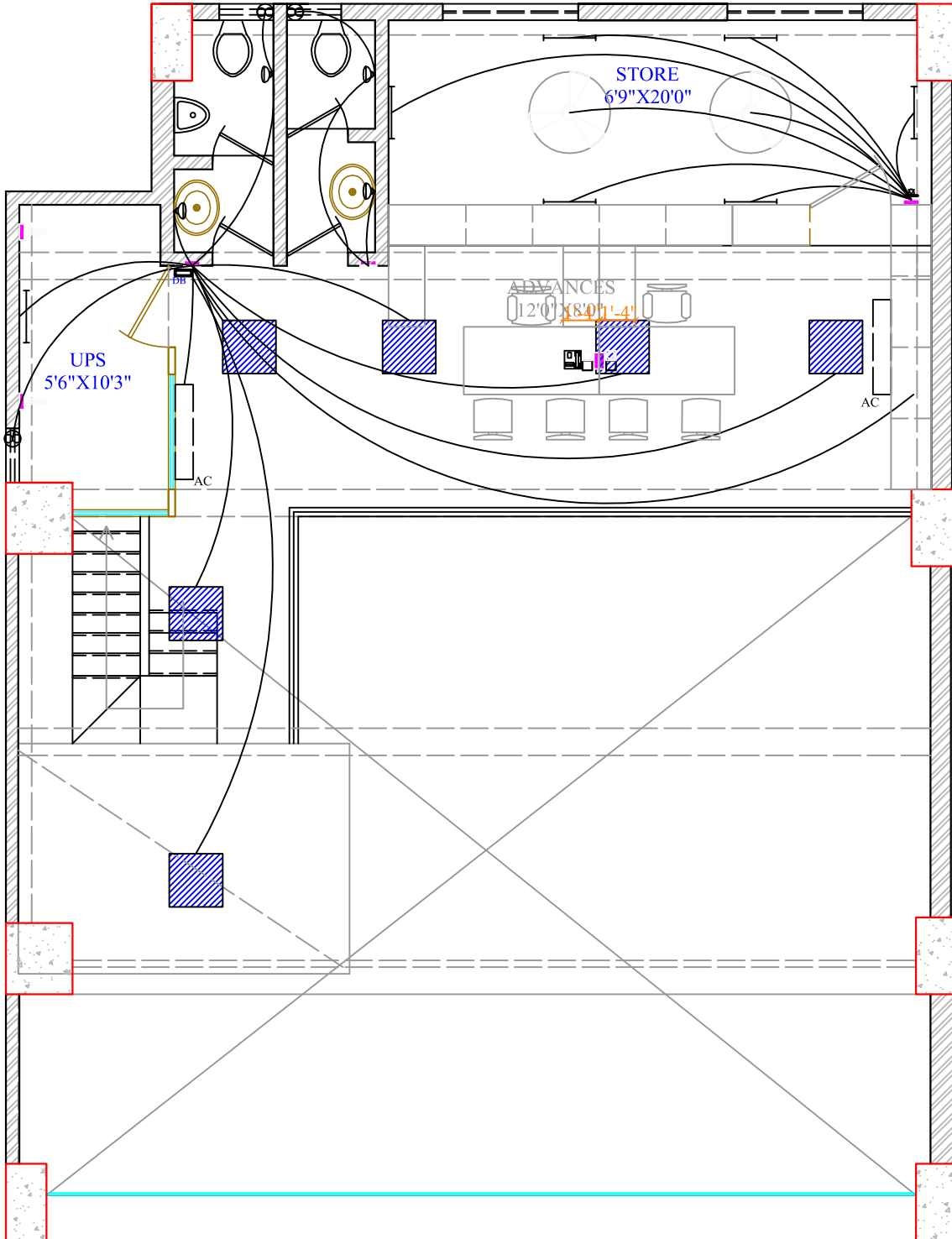


LEGEND			
	SWITCH BOARD		COMPUTER POINT
	WALL POINT		LAN CABLE
	TUBELIGHT		2X36- 600X600 LED FITTING
	6 AMP SOCKET		3M HIGH POLE LIGHT
	16 AMP SOCKET		LED COB
	TELEPHONE		LED SURFACE FITTING
	EXHAUST		METER BOARD
	CEILING FAN		DISTRIBUTION BOARD
	WALL FAN		ETHERNET
	BELL SWITCH / RINGER		



- ARMSTRONG CEILING PANEL
- 2x36W LED 600X600 FIXTURE
- CASSETTE AIR- CONDITIONING UNIT

07.07.2018

ELECTRICAL LAYOUT- MEZZANINE FLOOR

INTERIOR DESIGN FOR BANK OF MAHARASHTRA, CAMP BRANCH

NORTH



ARCHITECT

AR. SHVETA S. KOTHAVALA
 ARCHITECT AND INTERIOR DESIGNER
 "PUSHKAR", 18, SARVODAYA SOCIETY,
 OLD HOTGI NAKA, CIVIL LINES,
 SOLAPUR. PH NO- 0217 2601592